



NO BUILDING PERMIT REQUIRED



Advantages of a mobile home compared to campers:

- All-season capability. Living in winter temperatures down to -30°C.
- Comfortable and convenient bathroom and shower.
- Large, spacious refrigerator.
- Modularity: combining several homes into one structure.
- High ceiling. Convenient for daily use, suitable for tall people and those with claustrophobia.

Five reasons to choose an all-season mobile home on wheels:

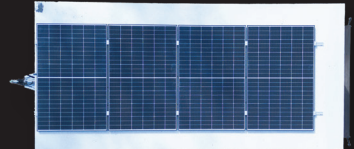
- No building permit required. Can be installed anywhere, even where construction is prohibited.
- Versatility of use. You can live in one place or travel year-round.
- No utility bills.
- Cost. Mobile homes are cheaper than regular houses.
- Ideal for organizing campsites, glamping, or modular-type hotels.

SIDE

FRONT

BACK

TOP



Dimensions: External: Width - 2.50m / Length - 6m (with Terrace) / Height from the ground to top - 3.3 m.
Internal: Width - 2.35m / Length - 5m / Height - 2.5m. Height from the ground to top (with solar panel) - 3.37 m.

Mobile House Specifications:

- Equipped with 5 sleeping places. Dining area equipped with 6 seats.
- Mounted on two axis trailer with inertial brakes.
- Total weight: 2750 kg. For driving license category: BE.
- Facades painted with Special Flexible, Waterproofing Eco Plaster.
- Mobile House equipped with: Air Conditioner / Heat pump (Air to Air). Heat recovery unit: Recuperator, Refrigerator, Induction stove, Boiler, Shower, BioToilet, Fresh Water tank: Capacity: 100 litres.
- Possibility to use Local or Autonomous communications: Electricity, Water, Sewage.
- Facades painted with Special Flexible, Waterproofing Eco Plaster.
- Floor covering: wear/moisture resistant laminate 7 mm.
- Solar panels with inverter and battery.



LAYOUT
M 1:20

